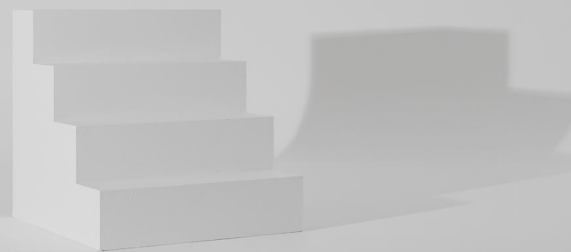


SUNSTUDIOS | BACKED
BY CANON

SPEC SHEET

STUDIO 1



STUDIO 1 SPECS

DIMENSIONS:

12.5m x 11m x 5m (h)

CYC:

4.5m H x 10m W

GREEN ROOM:

36m²

POWER:

2 x 32 amp 3 phase
1 x single phase 32 amp

SQ.M:

163m²

SOUND:

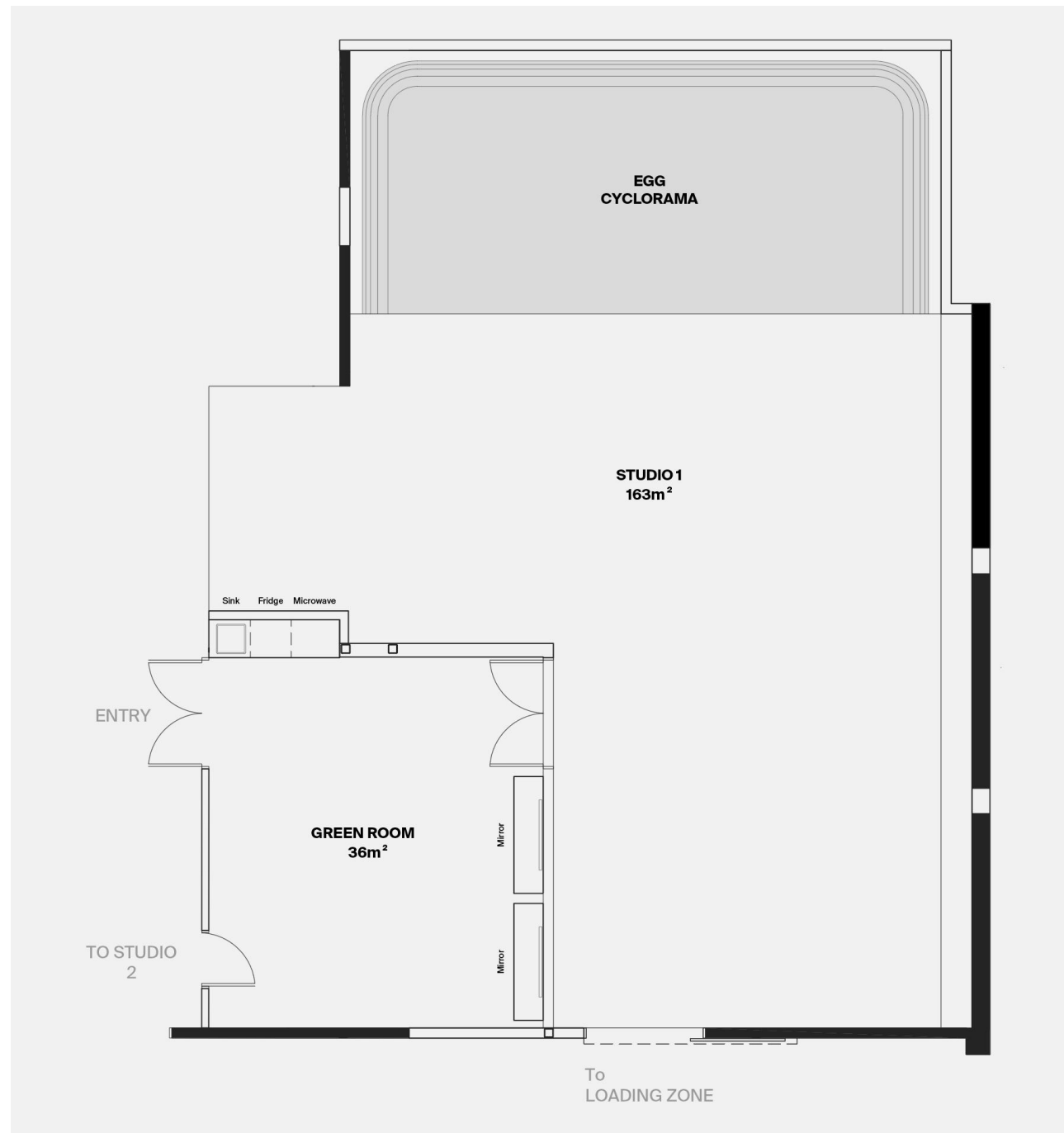
Not sound treated
or soundproofed

H&M

2 x Stations

FEATURES

- Direct loading dock access SMEG portable kitchen (on request)





STUDIO 1 OVERVIEW

STUDIO 1

- Studio 1 features a large egg cyclorama

FEATURES

- 2 x 32 amp 3 phase
- 1 x single phase 32 amp
- 2 car spaces in the front car park and 1 car space in the loading bay
- Climate Control Heating and Cooling
- Bose sound system networked to built-in iPad
- FOBA studio stand
- Polyboards, poly feet
- Shot bags
- Product and digi-op tables
- SMEG Portable kitchen on request
- On-Site SUNCAFE
- Early starts on request
- On-site lighting, camera and grip hire

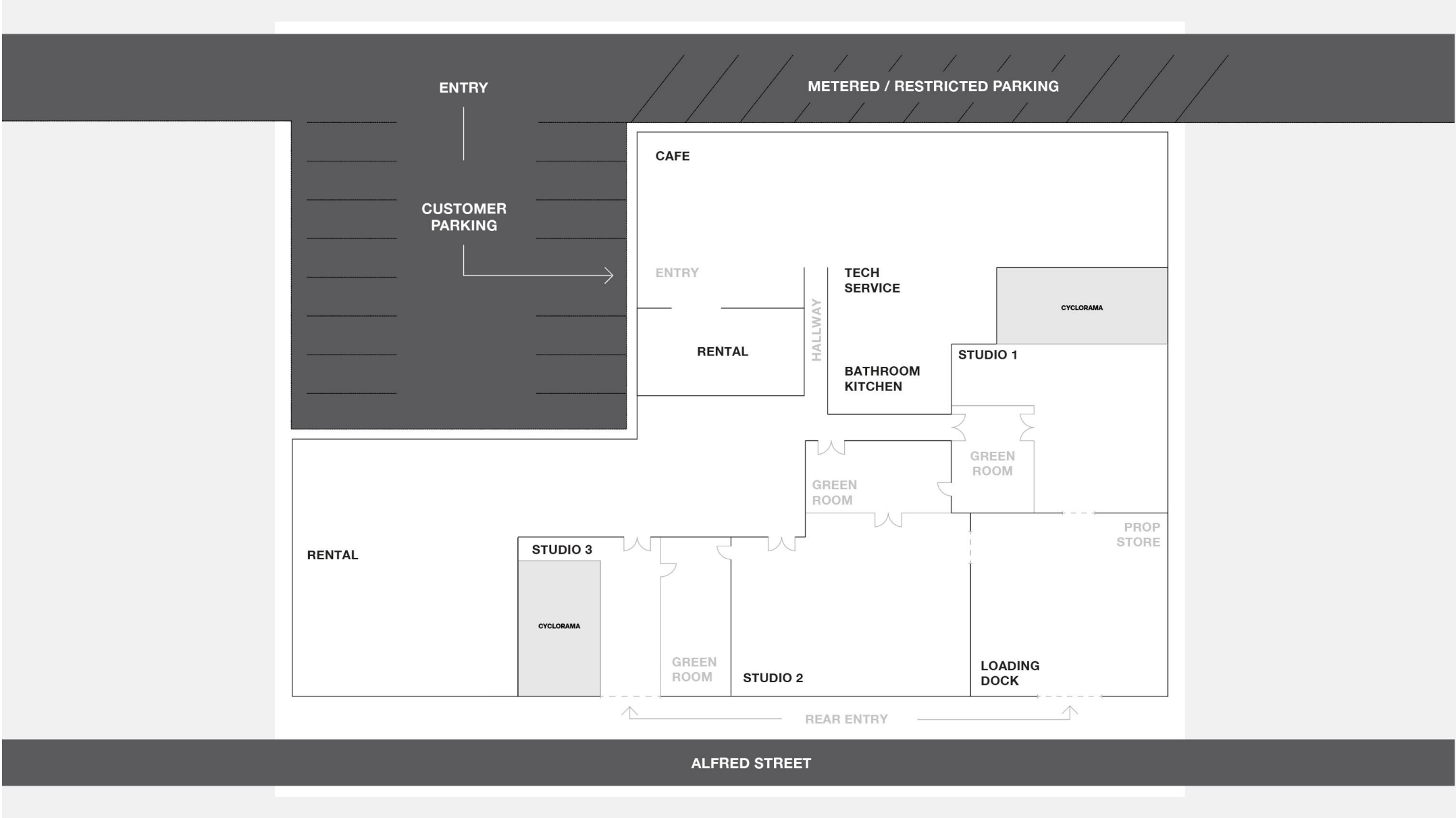
STYLING / DINING

- Dimensions: 6.2m x 5.6m
- 2 x hair and makeup station
- Clothing rack
- Iron, ironing board
- Kitchenette with sink, fridge, tea and coffee facilities, Zip Tap
- Dining table



SUNSTUDIOS

VENUE OVERVIEW



READY TO BOOK?
SHOOT US AN EMAIL NOW!

[EMAIL US →](#)